

PRIVATE SCHOOL

Creekside Christian Academy

Hampton, Georgia · Near Hartsfield–Jackson Atlanta International Airport

AT A GLANCE



SCHOOL TYPE
Private School



SCHOOL SIZE
300



GRADES ACCEPTED
Grades 7 – 12



SPORTS PARTICIPATION
Allowed



GRADUATION
Ceremony Allowed

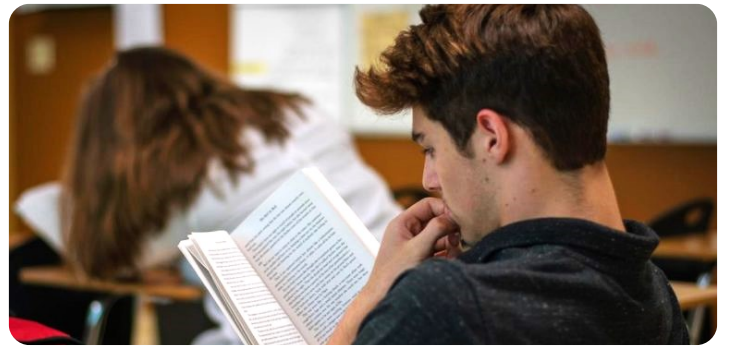


STEM PROGRAM
Available



ACCOMMODATION
Homestay

★ [Campus Gallery](#)



About the Area

The Creekside Christian Academy is located in Hampton, Georgia and offers a suburban environment with a growing community. Hampton is experiencing ongoing development and welcomes diversity. The cost of living is generally considered moderate compared to larger metropolitan areas. Transportation primarily relies on personal vehicles, although ride-sharing services are available. Public transportation options are limited within Hampton itself, but connections to regional services exist. The population includes a mix of families, young professionals, and long-time residents.

CLIMATE

Hampton experiences a humid subtropical climate, characterized by hot, humid summers and mild winters. Expect warm, sunny days from late spring through early fall. Rainfall is fairly consistent throughout the year, with occasional thunderstorms, especially during the summer months. The surrounding environment is lush and green, with plenty of trees and natural landscapes.

ACTIVITIES

Hampton offers various opportunities for recreation and leisure. Several parks and green spaces provide areas for walking, jogging, and picnicking. The area is near attractions that offer activities like hiking and water sports. Local community events and festivals take place throughout the year, providing opportunities to engage with the local culture. There are also options for shopping and dining in nearby areas.

SAFETY

Hampton is generally considered a safe community with a close-knit atmosphere. Like any area, it's important to be aware of your surroundings and take standard safety precautions. The local authorities maintain a presence in the community, contributing to a sense of security. The quality of life is generally good, with access to essential services and amenities.

STUDENT LIFE

Hampton provides a supportive atmosphere for students, with a focus on community engagement. While not a large college town, the area offers opportunities to connect with other students through school activities and local events. The cultural scene is developing, with art galleries and performance venues in nearby cities. Students often find a sense of belonging within the community.

Special Programs

STEM

Admissions

GRADES ACCEPTED

7 8 9 10 11 12

PROGRAM DURATIONS

Fall Semester Spring Semester Academic Year

ENGLISH REQUIREMENTS

Minimum Level: B2

ELTiS Other Tests Case by Case

Athletics by Season

Fall

Cheer

Cross Country

Football (boys)

Volleyball

Winter

Basketball

Swimming

Varsity Bass Fishing

Spring

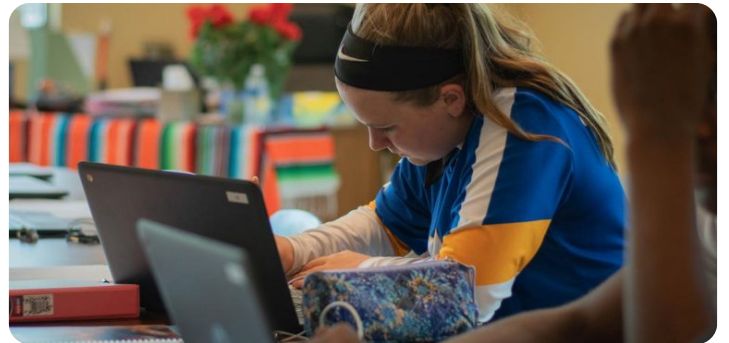
Baseball (boys)

Golf

Soccer

Softball (girls)

Track & Field



Clubs & Extracurriculars

Chapel

Missions

Praise Brand

Outreach

Chess Club

Academic Bowls

Contact & Location



2455 Mt. Carmel Rd, Hampton, Georgia, 30228



(770) 961-9300



<https://creeksidechristian.academy/>



Creekside Christian Academy

<https://creeksidechristian.academy/>

