



# Mesa Public Schools

Mesa, Arizona

## AT A GLANCE



SCHOOL TYPE  
**Public School**



SCHOOL SIZE  
**3000**



GRADES ACCEPTED  
**Grades 10 – 12**



SPORTS PARTICIPATION  
**Allowed**



GRADUATION  
**Ceremony Allowed**



AP COURSES  
**24 Available**



STEM PROGRAM  
**Available**



IB PROGRAM  
**Offered**

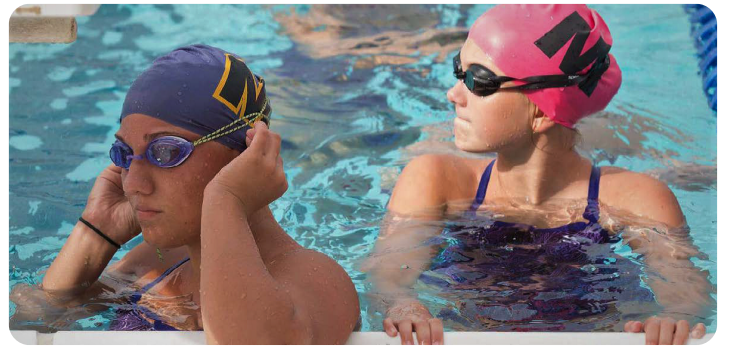


ACCOMMODATION  
**Homestay**

---

## ★ Campus Gallery

---



## About the Area

The Mesa Public Schools is located in Mesa, Arizona and provides a welcoming environment with a diverse population. Mesa boasts a relatively moderate cost of living compared to other major US cities, making it an attractive option for students. Transportation options include public buses, light rail, and ride-sharing services, though many residents find having a car convenient. The city is continuously growing with many opportunities for learning and working. Mesa is considered a suburb of Phoenix, offering a balance of urban amenities and suburban living. The city provides many resources and community engagement for students.

### CLIMATE

Mesa experiences a desert climate, with hot summers and mild winters. Sunshine is abundant year-round. Temperatures can reach extreme highs in July and August. Rainfall is minimal, and humidity is generally low. The surrounding desert landscape contributes to the unique environment and outdoor recreation opportunities.

### ACTIVITIES

Mesa offers a variety of activities, from exploring local museums and art galleries to attending community events and festivals. The surrounding area is ideal for outdoor recreation, including hiking, biking, and exploring nearby parks and mountains. There are also opportunities for water sports on nearby rivers and lakes. The city offers a unique southwestern experience.

### SAFETY

Mesa is generally considered a safe city with a dedicated police force. Like any urban area, it's important to be aware of your surroundings and take precautions to protect your belongings. The overall quality of life is good, with access to healthcare, well-maintained public spaces, and community services.

### STUDENT LIFE

Mesa has a vibrant student vibe, with a mix of local and international students. The city offers a diverse cultural scene, with restaurants, shops, and entertainment options catering to various tastes. There are opportunities to connect with other students through clubs, organizations, and campus events. Many events are held in the city throughout the year, providing cultural exposure.

## Academic Programs

### AP COURSES

- 2-D Art and Design
- Drawing
- Biology
- Calculus Ab
- Calculus Bc
- Chemistry
- Chinese
- Computer Science
- English Language and Composition
- English Literature and Composition
- Environmental Science
- French
- German
- Macroeconomics
- Music Theory
- Physics
- Psychology
- Research
- Seminar
- Spanish Language and Culture
- Statistics
- Us Government
- Us History
- World History: Modern

## ELECTIVES

Drawing

Painting

Sculpture

Ceramics

Art Club

AP Studio Art

Digital Photography

Graphic Design

Photo Club

Jewelry

## ★ Special Programs

AP

IB

STEM

## 🎓 Admissions

### GRADES ACCEPTED

10

11

12

### PROGRAM DURATIONS

Fall Semester

Spring Semester

Academic Year

### ENGLISH REQUIREMENTS

Minimum Level: B2

ELTiS

Eltis form 2, level 4

## 🏆 Athletics by Season

### ● Fall

Badminton

Cheer (girls)

Flag Football (girls)

Football (boys)

Pom (girls)

Beach Volleyball (boys)

Volleyball (girls)

Sand Volleyball (boys)

Cross Country

Golf

Swimming

Diving

### ● Winter

Basketball

Coed Basketball

Soccer

Wrestling

### ● Spring

Baseball (boys)

Softball (girls)

Volleyball (boys)

Tennis

Track & Field



## ★ Clubs & Extracurriculars

- Ac/Dec
- AP Council
- Apex Robotics
- Astronomy Club
- Athletic Hall of Fame
- Auto/Fab Tech
- Avid Club
- Band Leadership
- Bio Med Club
- Black Student Union
- Boys Volleyball
- Bring Change to Mind
- Choir
- Christian Club
- Clean up Club
- Club Diversity
- Club Interact
- Computer Science
- Culinary Arts
- Cultural Ambassadors
- Dance Force
- DECA
- Drama Club
- Dream Catchers
- E-Sports
- Educators Rising
- Engineering Club
- Environmental Club
- Eye of the Beholder Dnd Club
- FCCLA/Catering
- Fellowship of Christian Athletes
- FFA
- Fishing Club and Many More

## 📍 Contact & Location

- 📍 63 East Main Street, Mesa, Arizona, 85201
- 📞 (480) 472-0200
- 🔗 <https://www.mpsaz.org/>



